



HEALTHCARE
TRIANGLE™

Reinforcing Healthcare Progress™

Revenue Cycle Check-Up

Take charge of your hospital's financial wellness!

Who Needs a Revenue Cycle Check-up?

If your hospital or clinic recently underwent an implementation or migration to a newer EHR platform within the past 12-20 months or introduced new services, procedures or offerings a Revenue Cycle Check-Up (RCC) could benefit you.

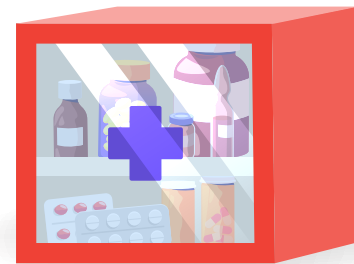
The Revenue Cycle Check-Up (RCC) is a deep and thorough investigation into revenue charge capture. It's a 2-3-week project where our experts gather information by conducting interviews and a system audit. Our team provides you with a priority-ranked report of findings, uncovering how you can improve financially.

This Check-Up is a low-cost, low- risk way to discover how to better leverage your investment in your healthcare information technology.

Why Are Check Ups So Important?

Regular screening can help find problems before they start. They also can help find problems early, when your chances for prevention or cure are better. By getting the right assessment services, screenings, and prescribed EHR configuration modifications, you are taking steps that help your chances for improving quality of care delivery, improved provider & patient satisfaction, maximizing your reimbursement, minimizing lost charges, and strengthening your immediate and long-term financial health.

This Check-Up is a low-cost, low- risk way to discover how to better leverage your investment in your healthcare information technology.



Get in Touch to Schedule an Assessment!
888.706.0310 | info@healthcaretriangle.com

For more information, visit www.healthcaretriangle.com



HEALTHCARE
TRIANGLE™

Reinforcing Healthcare Progress™

Benefits

In a recent RCC, we uncovered documentation errors due to system configuration that had been leading to millions of dollars of lost charges and claims. We prescribed a solution that allowed the client to ensure those losses were no longer endured.

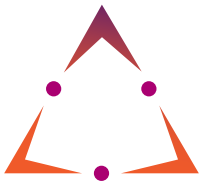
What is the TAO Series from Healthcare Triangle?

The TAO Series is a series of Check-Ups available to hospitals leveraging Electronic Health Record technology. Each Check-Up is a low-cost, rapid assessment strategy that uncovers targeted areas of opportunity (TAO) where an organization can take the prescribed steps to improve.

Revenue Cycle Check-Up (RCC), Provider Experience Priority (PEP), Ambulatory Workflow Examination (AWE), and Pharmacy/Medications Inquiry (PMI) are popular options for 2021.

These check-ups last 1-4 weeks and help:

- Uncover millions of dollars of lost revenue and charges
- Re-energize physicians and improve their adoption and efficiency
- Give providers "one patient, one record" access while ensuring complete documentation
- Streamline clinical workflow
- Hospitals win back the value from their EHR investments



HEALTHCARE
TRIANGLE™

Reinforcing Healthcare Progress™

Request an Assessment

info@healthcaretriangle.com
(888) 706-0310

Healthcare Triangle, Inc.™ (HCTI), based in Pleasanton, Calif., reinforces healthcare progress through breakthrough technology. HCTI achieves HITRUST Certification for Cloud and Data Platform (CaDP) to manage risks. We support healthcare and life sciences organizations improve health outcomes by enabling the adoption of new technologies, data enlightenment, business agility, and accelerating the value of their IT investments. HC/LS turn to HCTI for expertise in cloud transformation, security and compliance, data lifecycle management, and clinical/business performance optimization.